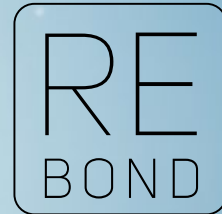


nanokeratin®
SYSTEM



nanok•plex®

nanokplex®

Pioneer Bio Technology

Synergizing beauty, science and wellbeing at the forefront of hair technology, Nanokeratin System is a global Bio-Technological pioneer, focused on researching & developing innovative convalescence technologies

By formulating new generation patented M460P biomimetic technology, Nanokeratin System laboratories have created NanoKplex - a new advanced series integrating fresh Milk and enabling hair to heal itself during and after chemical processes back to its natural state

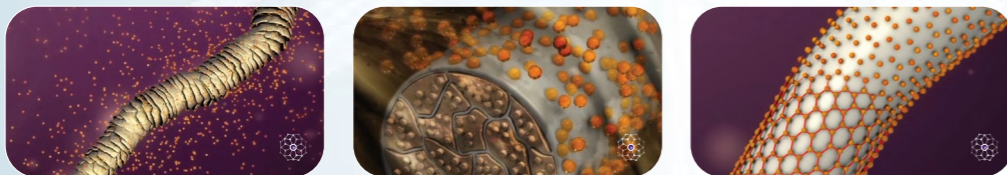
NanoKplex is a creator, multiplier, reinforcer & stabilizer of all hair bonds as Di-Sulphide (Sulphur) & Van der Waals

NanoKplex emulates natural hair process by enabling hair to recuperate itself by finding single sulfur bonds and cross linking them back together to form Di-Sulphide (Sulphur) bonds during and after the following chemical processes:
Colouring • Bleaching • Highlighting • Japanese Straightening
Chemical Straightening • Chemical Permanent Curling

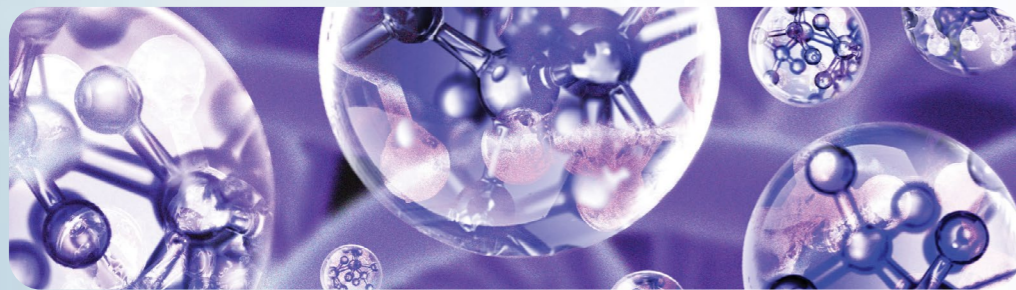
Pioneer Bio Technology

nanokplex comprises highly substantive polymers performing Enzyme alike affinity to hair structure to enable damaged hair recuperating itself from the inside and outside during and after In Salon chemical processes back to its natural state, based on pioneering patented M460P Biomimetic technology.

nanokplex is a creator, multiplier, reinforcer & stabilizer of all hair bonds as Di-Sulphide (Sulphur) & Van der Waals.



Di-Sulphide (Sulphur) rebonding agents



PRO KIT

NanoKplex Pro Kit contains the following items:



01 Bond Builder
preventing bonds separation
CROSS LINKING
multiplying and stabilizing bonds
BUILDING HAIR STRUCTURE



02 Bond Enhancer
RESTRUCTURING
all chemical bonds
enabling hair to recuperate
itself from the inside



03 Balancing Shampoo
gentle hair cleansing
BALANCING
moisture and keeping
natural healthy lustrous hair



04 Sustainer
sustaining healthy, elastic
STRONG HAIR
structure, smoothing & enhancing
FREEDOM OF MOVEMENT



Professional



01 | REBOND • BOND BUILDER

No. 01 ReBond, based on pioneer patented M460P biomimetic technology, comprises highly substantive polymers performing Enzyme alike affinity to hair structure and enabling hair to recuperate itself by performing the followings:

- Preventing Di-Sulphide (Sulphur) bonds separation during chemical processes
- Cross Linking, creating, multiplying and stabilizing Di-Sulphide (Sulphur) bonds
- Strengthening hair structure
- Knitting hair fibre back to its hydrophobic state implementing Lotus Effect of minimizing water & dirt adhesion
- Protecting scalp skin
- As applied separately from colour, lightener or other chemical -
Restructuring all hair bonds as Di-Sulphide (Sulphur) & Van der Waals



Volume: 550 ml | 320 ml | 150 ml | 20ml
Volume: 18 fl oz | 10 fl oz | 5 fl oz | 0.6 fl oz



02 | REINFORCE • BOND ENHANCER

No. 02 ReInforce, based on pioneer patented M460P biomimetic technology, comprises highly substantive polymers performing Enzyme alike affinity to hair structure and enabling hair to recuperate itself by performing the followings:

- Removing chemicals leftovers
- Restructuring all hair bonds as Di-sulphide (Sulphur) & Van der Waals
- Entering gaps between cuticles
- Closing Cuticles
- Forming solid inner layer to seal pigment and nourishing nutrients
- Emulating natural hair process by enabling hair to recuperate itself from the inside
- Balancing hair's and scalp's moisture
- Knitting hair fibre back to its hydrophobic state implementing Lotus Effect of minimizing water & dirt adhesion
- Strengthening hair structure



Volume: 550 ml | 320 ml | 150 ml | 20ml
Volume: 18 fl oz | 10 fl oz | 5 fl oz | 0.6 fl oz

Home care



03 | REFRESH • BALANCING SHAMPOO

Home Care Service to perform the followings:

- Gentle hair cleansing
- Keeping natural hair pH
- Balancing hair's moisture

Volume: 550 ml | 320 ml | 20ml
Volume: 18 fl oz | 10 fl oz | 0.6 fl oz



04 | RETAIN • SUSTAINER

Home Care Service to perform the followings:

- Sustaining & prolonging ReBond & Reinforce In Salon Services efficiency
- Light Smoothing
- Knitting hair fibre back to its hydrophobic state implementing Lotus Effect of minimizing water & dirt adhesion
- Sustaining healthy, elastic and strong hair structure
- Balancing hair's moisture
- Forming outer layer to protect hair and making it lustrous
- Conditioning and enhancing fibre alignment
- Reducing friction between hair strands for freedom of movement

Volume: 550 ml | 320 ml | 20ml
Volume: 18 fl oz | 10 fl oz | 0.6 fl oz





MILK

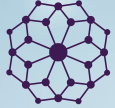
Fresh Milk Protein

FRESH MILK PROTEIN

NanoKplex, based on M460P biomimetic technology, is integrating fresh Milk which is referred as a beneficial whole protein provider for the hair

Milk contains essential substances as whole whey protein and casein as well as amino acids including glutamine, vitamin A & B, phosphorous, calcium, magnesium and zinc which perform the followings:

- Nourishing and moisturizing hair - ideal as Dry and Rough Hair treatment
- Balancing scalp and hair reinforcing healthy hair
- Conditioning and softening hair providing smooth texture & shiny look
- Reducing friction between hair strands for freedom of movement
- Protecting and strengthening hair
- Preventing hair loss and encouraging hair growth



nanokeratin®
S Y S T E M

nanok•plex®



www.nanokeratinsystem.com